

# MPV Series Electric Actuated Angle-Seat Valves

Motor valve for on/off- and modulating operation for neutral and aggressive media.

- Compact design
- Self calibration
- Unaffected by lightly contaminated media
- For operating temperatures from -30°C up to +200°C
- Working pressure up to 40 bar
- Versatile actuator options
- Actuators with control function also available with spring return

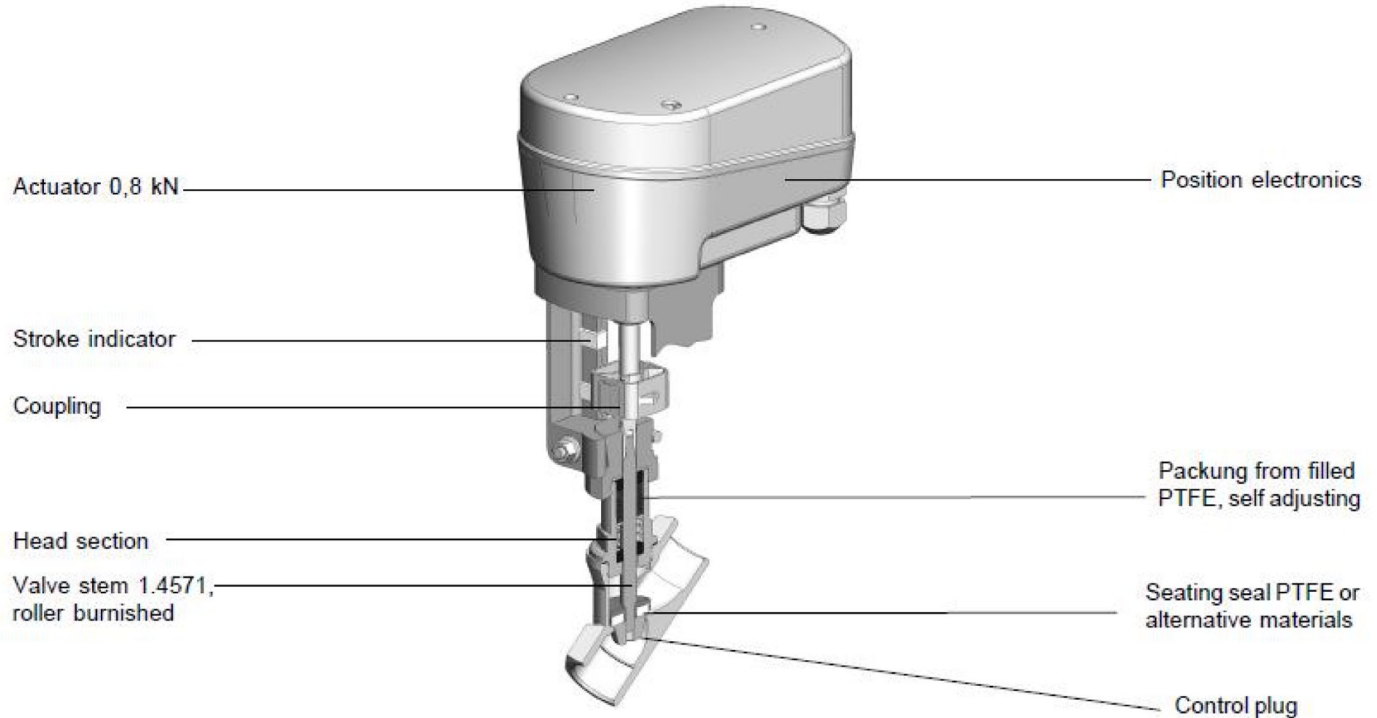
## Technical Information

Body Material	AISI 316 SS
Nominal Size	DN15...DN50 1/2"...2"
Connections :	
Pipe thread	1/2"...2"
NPT thread	1/2"...2"
Welding ends	DN15...DN50
Clamp Connections	DN15...DN50
Nominal Pressure	PN40
Max.Fluid Temperature	-30°C ... 200°C
Viscosity	max. 600 mm <sup>2</sup> /s (600 cSt)
Vacuum	max. 0,001 bar,abs. / 0,015 psia



## Admissible Differential Pressures

Actuator Thrust	Pmax bar					
	DN15	DN20	DN25	DN32	DN40	DN50
800 N	40	25	16	10	7	5
1600 N	60	40	30	20	16	10



USKON AKIŞKAN KONTROL SİSTEMLERİ SANAYİ VE TİCARET LTD. ŞTİ.

Kemankeş Kara MustafaPaşa Mah. Ağaç Tulumba Sok. No: 4/A Karaköy / İstanbul Tel: +90 (212) 251 05 05 Fax: +90 (212) 251 05 79 info@us-kon.com.tr

<b>MPV10/20 -</b>			<b>K</b>							<b>S</b>		
<b>Nominal Size:</b>												
DN15	015											
DN20	020											
DN25	025											
DN32	032											
DN40	040											
DN50	050											
<b>Item:</b>												
Motor Valve		MV										
Valve without actuator		OV										
Only Actuator		OA										
<b>Body design:</b>												
Angle bodied			1									
<b>Connection:</b>												
Whitworth- thread				B								
NPT thread				N								
Without thread				K								
Welding ends acc. ISO				V								
Welding ends acc. DIN 11850				W								
<b>Body material:</b>												
Brass				1								
Stainless steel				2								
<b>Seating seal:</b>												
PTFE					0							
FKM (Viton)					1							
EPDM					2							
NBR					3							
PEEK					4							
<b>Actuator:</b>												
Control BM24C- 24V AC/DC-Position control 2-10V-Feedback 2-10V					1							
Control BM24C/I- 24V AC/DC-Position control 4-20mA-Feedback 2-10V					2							
Control BM24C/IOS- 24V AC/DC-Position control 4-20mA-Feedback 4-20Ma-2 Limit switchess					3							
Control BM115C/IOS- 115V AC-Position control 4-20mA-Feedback 4-20Ma-2 Limit switchess					4							
Control BM230C/IOS- 230V AC-Position control 4-20mA-Feedback 4-20Ma-2 Limit switchess					5							
On-off actuator BM24-24V AC/DC					6							
On-off actuator BM230-230V AC					7							
On-off actuator BM115-115V AC					8							
<b>Control plug:</b>												
None					-							
Linear 100%					1							
Equal percentage 100%					2							
Linear 40%					3							
Equal percentage 40%					4							
Linear 25%					5							
Equal percentage 25%					6							
<b>Safety position:</b>												
Without safety position					-							
Spring to close					0							
<b>Stroking times:</b>												
Standard (70s/20mm for control actuators- 7,5s/mm for on-off actuators)					-							
4,5s/mm (on-off actuators only)					L							
35s/20mm (control actuators only) avec safety spring return 60s/20mm					1							
140s/20mm (control actuators only)					2							
280s/20mm (control actuators only)					3							

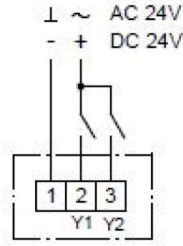


USKON AKIŞKAN KONTROL SİSTEMLERİ SANAYİ VE TİCARET LTD. ŞTİ.

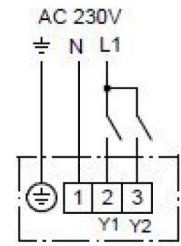
Kemankeş Kara MustafaPaşa Mah. Ağaç Tulumba Sok. No: 4/A Karaköy / İstanbul Tel: +90 (212) 251 05 05 Fax: +90 (212) 251 05 79 info@us-kon.com.tr

## On/Off-Actuators

**Actuator: BM24**  
24V AC/DC  
3-step drive

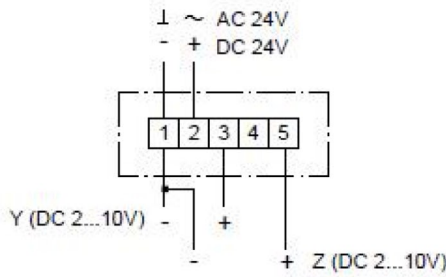


**Actuator: BM230, BM115**  
230V 50/60 Hz  
115V 50/60 Hz  
3-step drive

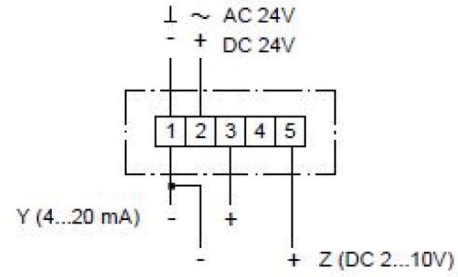


## Control Actuators

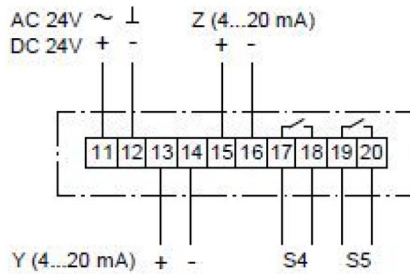
**Actuator: BM24C and BM24C-R**  
24V AC/DC  
input signal 2-10V  
feedback signal 2-10V



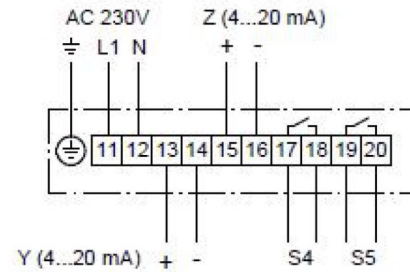
**Actuator: BM24C/I and BM24C/I-R**  
24V AC/DC  
input signal 4-20mA  
feedback signal 2-10V



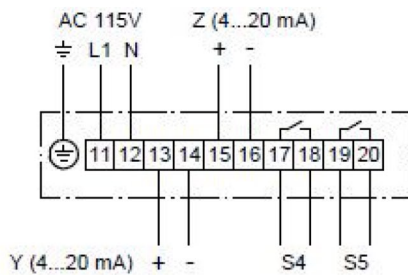
**Actuator: BM24C/IOS and BM24C/IOS-R**  
24V AC/DC  
input signal 4-20mA  
feedback signal 4-20mA  
2 limit switches



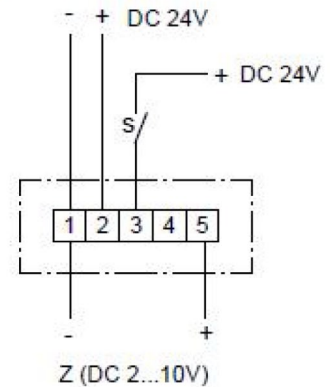
**Actuator: BM230C/IOS and BM230C/IOS-R**  
230V 50/60Hz  
input signal 4-20mA  
feedback signal 4-20mA  
2 limit switches



**Actuator: BM115C/IOS and BM115C/IOS-R**  
115V 50/60Hz  
input signal 4-20mA  
feedback signal 4-20mA  
2 limit switches



**Actuator: BM24C and BM24C-R**  
24V DC  
feed back signal 2-10V

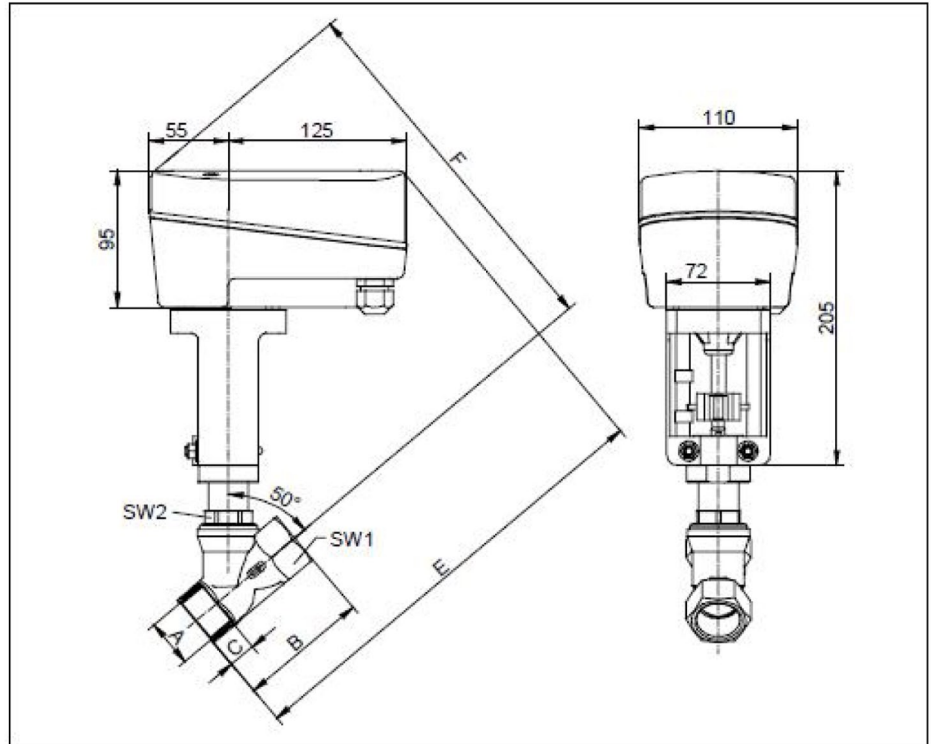


USKON AKIŞKAN KONTROL SİSTEMLERİ SANAYİ VE TİCARET LTD. ŞTİ.

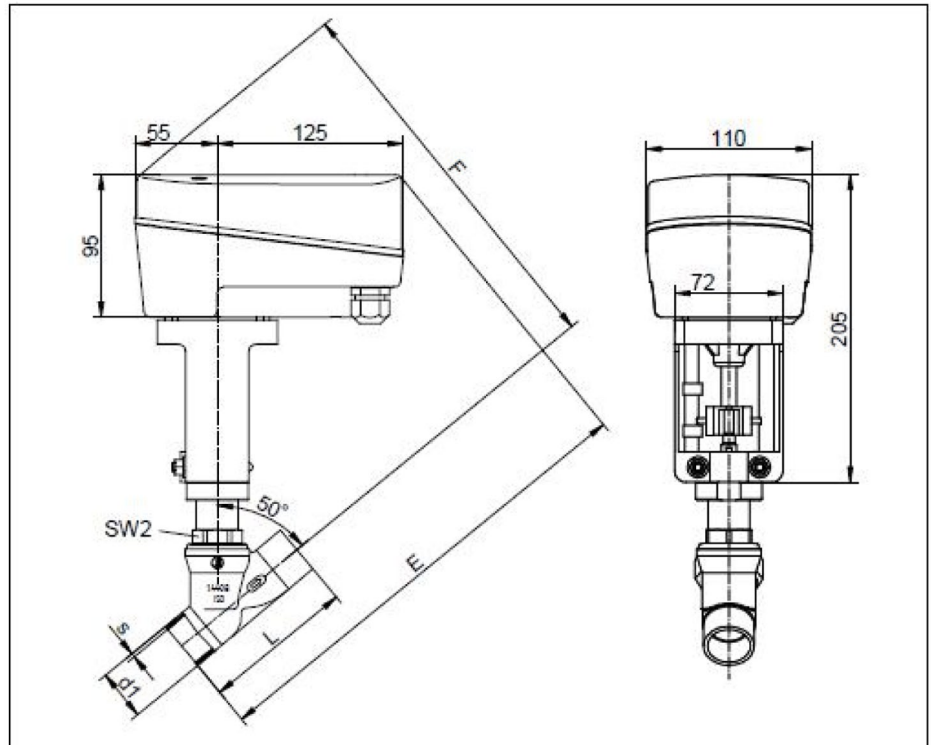
Kemankeş Kara MustafaPaşa Mah. Ağaç Tulumba Sok. No: 4/A Karaköy / İstanbul Tel: +90 (212) 251 05 05 Fax: +90 (212) 251 05 79 info@us-kon.com.tr



## Body with threaded ends Rp/NPT



## Body with welding ends DIN/ISO



DN	A Rp / NPT	C Rp	ISO NPT	d1	s	ISO d1	s	DIN Rp/NPT	L DIN/ISO	E	F	SW1	SW2	Stroke	Weight kg
08	1/4"	12	10,7	-	-	-	-	60	-	251	296	20	30	8,5	1,9
15	1/2"	15	14,5	21,3	2	18	1,5	65	80	300	255	25	30	9	2
20	3/4"	16,3	15	26,9	2,3	22	1,5	75	90	310	255	31	30	14	2,2
25	1"	19,1	18	33,7	2,6	28	1,5	90	100	315	260	39	30	18	2,4
32	1 1/4"	21,4	18,5	42,4	2,6	34	1,5	110	110	330	275	48	30	21	2,8
40	1 1/2"	21,4	18,5	48,3	2,6	40	1,5	120	120	340	280	55	30	22	3,1
50	2"	25,7	19	60,3	2,9	52	1,5	150	150	350	290	68	32	22	3,7

Dimensions in mm

Other body designs on request



USKON AKIŞKAN KONTROL SİSTEMLERİ SANAYİ VE TİCARET LTD. ŞTİ.

Kemankeş Kara MustafaPaşa Mah. Ağaç Tulumba Sok. No: 4/A Karaköy / İstanbul Tel: +90 (212) 251 05 05 Fax: +90 (212) 251 05 79 info@us-kon.com.tr