

# FLOW SIGHT GLASS GAUGE

FW-1-SINGLE WINDOW FW-2-DOUBLE WINDOW

## Technical Data

**Service:** For gases and liquid

**Wetted Material:** Window-Tempered glass, Body-SS316  
Gasket-Teflon, Impeller-(1)ABS plastic (2)Stainless steel 316

**Temperature Limit:** For ball-130°C  
For impeller-(1) ABS plastic-93°C (2) PFA-150°C

**Pressure Limit:** FW-1 – 150 psig (10.34 bar)  
FW-2 – 125 psig (8.62 bar)

**Connection:** Threaded

**Size:** 1/4", 3/8", 1/2", 3/4", 1", 1 1/4", 1 1/2", 2" NPT or PF Female available

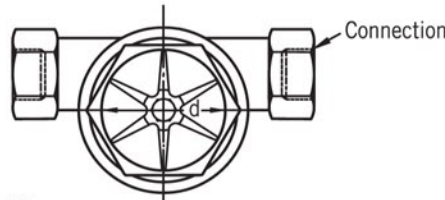
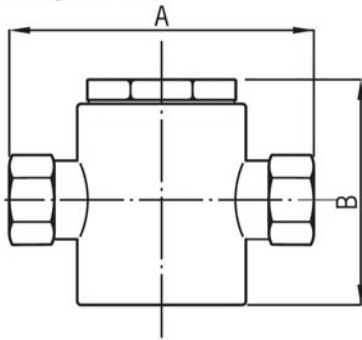


FW-1  
(Single Window)

FW-2  
(Double Window)

## Dimension

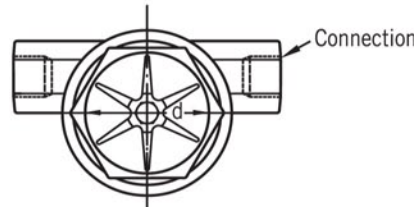
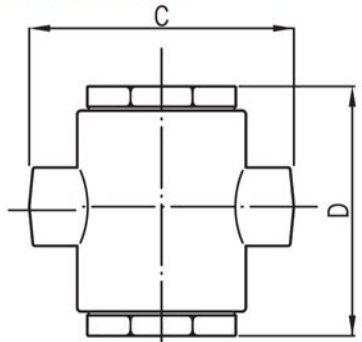
(A) Single Window



unit=mm

Size	1/4"	3/8"	1/2"	3/4"	1"	1 1/4"	1 1/2"	2"
A	76	76	100	100	109	109	150	150
B	43	43	67	67	72	72	95	95
d	32	32	40	40	40	40	57	57

(B) Double Window



unit=mm

Size	1/4"	3/8"	1/2"	3/4"	1"	1 1/4"	1 1/2"	2"
C	76	76	100	100	109	109	150	150
D	70	70	80	80	96	96	110	110
d	32	32	40	40	40	40	57	57

## Ordering Information

FW	Code	Model	Code	Connection Size-female
	1	Single Window	2	Double Windows
		<b>Code</b>	<b>Body Material</b>	(1) 1/4" (2) 3/8" (3) 1/2" (4) 3/4"
		S	SS316	(5) 1" (6) 1 1/4" (7) 1 1/2" (8) 2"
		<b>Code</b>	<b>Gasket</b>	<b>Code</b> <b>Connection Size-female</b>
		T	Teflon	(1) NPT (2) PF (3) option
		<b>Code</b>	<b>Indicator Type</b>	<b>Code</b> <b>CE 1128 Request</b>
		A	Impeller-ABS	1 with label sticker
		B	Impeller-PFA	2 with S.S nameplate
FW				+ Complete Ordering Code



USKON AKIŞKAN KONTROL SİSTEMLERİ SANAYİ VE TİCARET LTD. ŞTİ.

Kemankeş Kara MustafaPaşa Mah. Ağaç Tulumba Sok. No: 4/A Karaköy / İstanbul Tel: +90 (212) 251 05 05 Fax: +90 (212) 251 05 79 info@us-kon.com.tr