

# FLOW METER SIGHT GLASS GAUGE

## FT SERIES – Thread Connection

The flow meter sight glass was designed with spring paddle to indicating flow rate for easy observation of flowing fluid from any direction.

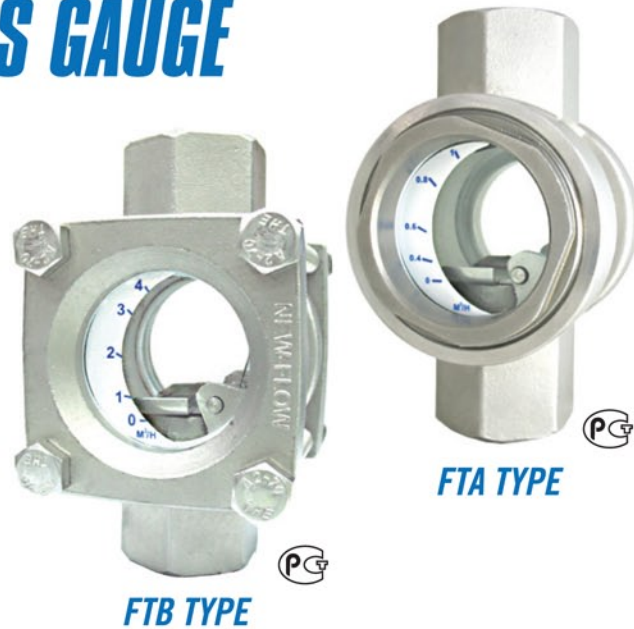
### Technical Data

**Service:** – Compatible gas and liquid – Water treatment system  
– Industrial flow system – Double window indication

**Material:** Body– SS304, SS316, SS316L available;  
Paddle– SS316; Spring– SS316  
Guge– Tempered glass; Gasket– Teflon or Gore Tex

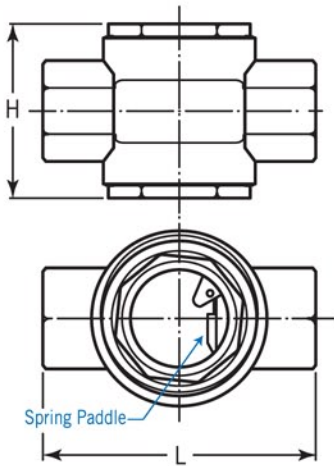
**Max. working temperature:** 80°C

**Max. working pressure:** FTA type– 10 kg/cm<sup>2</sup> at 25°C water  
FTB type– 15 kg/cm<sup>2</sup> at 25°C water

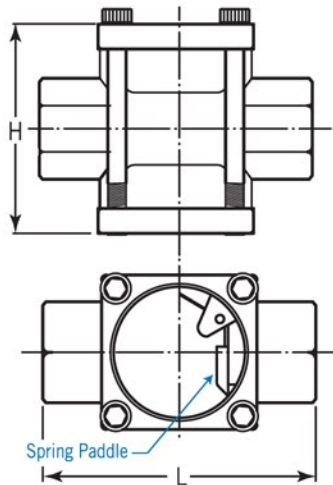


### Dimensions

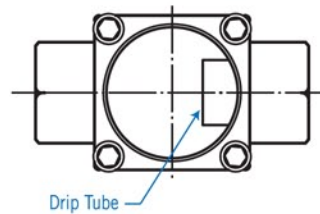
FTA Type (with paddle)



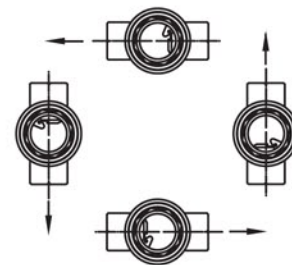
FTB Type (with paddle)



Drip Tube Type  
(without paddle)



### Mounting Position



Size	15A	20A	25A	32A	40A	50A
L	114	114	114	130	130	150
H	72	72	72	120	120	136

Size	15A	20A	25A	32A	40A	50A
L	114	114	114	130	130	150
H	72	72	72	115	115	129

### Ordering Information

FTA/FTB	Code	Type
	W	With Paddle
	N	Without Paddle (Drip Tube)– scale unavailable
	Code	Material
	(A)	SS304 (B) SS316 (C) SS316L
	Code	Size
	(1)	15A (2) 20A (3) 25A (4) 32A (5) 40A (6) 50A
	Code	Connection Thread
	(1)	NPT (2) PF (3) option
	Code	Flow Range
	A~I	Plase refer to the Flow Range Table, and fill out the item code of requested range directly.
	N	No need flow range scale
FTA/FTB		Complete Ordering Code

### Flow Range Table

Item Code	Flow Range	Connection Size
A	0~1.5 M <sup>3</sup> /H	½"(15A), ¾"(20A), 1"(25A) available
B	0~3 M <sup>3</sup> /H	½"(15A), ¾"(20A), 1"(25A) available
C	0~4 M <sup>3</sup> /H	½"(15A), ¾"(20A), 1"(25A) available
D	0~8 M <sup>3</sup> /H	1¼"(32A), 1½"(40A), 2"(50A) available
E	0~10 M <sup>3</sup> /H	1¼"(32A), 1½"(40A), 2"(50A) available
F	0~12 M <sup>3</sup> /H	1¼"(32A), 1½"(40A), 2"(50A) available
G	0~16 M <sup>3</sup> /H	1¼"(32A), 1½"(40A), 2"(50A) available
H	0~18 M <sup>3</sup> /H	2"(50A)
I	0~24 M <sup>3</sup> /H	2"(50A)

#### Ordering code example:

**FTA-W-B-1-1-A**  
 → FTA = Model  
 → W = with paddle  
 → B = SS316  
 → 1 = 15A (½")  
 → 1 = NPT  
 → A = 0~1.5 M<sup>3</sup>/H



USKON AKIŞKAN KONTROL SİSTEMLERİ SANAYİ VE TİCARET LTD. ŞTİ.

Kemankeş Kara MustafaPaşa Mah. Ağaç Tulumba Sok. No: 4/A Karaköy / İstanbul Tel: +90 (212) 251 05 05 Fax: +90 (212) 251 05 79 info@us-kon.com.tr