

# FLOW SIGHT GLASS GAUGE F SERIES

## Flange Connection With or Without Spring Paddle

The flow sight glass was designed with or without spring paddle for easy observation of flowing fluid from any direction.

### Technical Data

- Service:** – Compatible gas and liquid – Water treatment system  
 – Industrial flow system – Double window indication
- Material:** Body– SS316, SS304, SS316L, SS304L, option available;  
 Paddle– SS316; Spring– SS316; Guge– Tempered glass;  
 Gasket– Teflon, Gore Tex, Graphite
- Max. working temperature:** 200°C (option: 300°C available)
- Max. working pressure:** FA type– 10 kg/cm<sup>2</sup> at 25°C water  
 FB type– 15 kg/cm<sup>2</sup> at 25°C water (option: 30 kg/cm<sup>2</sup>)  
 (FA, FB upon pressure on request available)



FA TYPE CE 1128

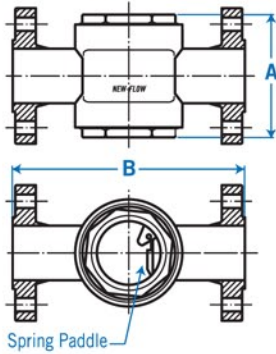


FB TYPE CE 1128

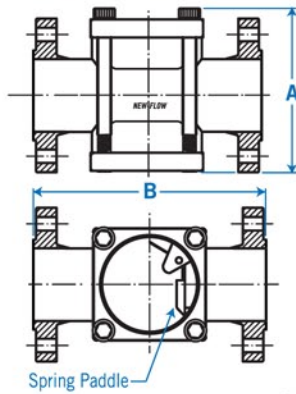


### Dimension-mm

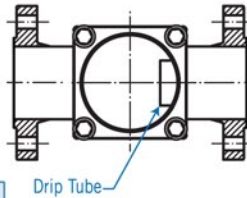
FA Type (with paddle)



FB Type (with paddle)



Drip Tube Type (without paddle)



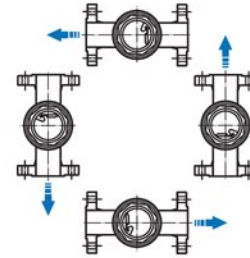
for FA Type

Size	Range	15A	20A	25A	40A	50A
A		114	114	114	130	150
B		130	130	160	200	220
B (option)		140	140	140	180	220

for FB Type

Size	Range	15A	20A	25A	40A	50A	65A	80A	100A	125A	150A	200A
A		72	72	72	115	129	134	150	190	240	250	345
B		130	130	160	200	220	270	270	320	380	420	500
B (option)		140	140	140	180	220	260	260	310	–	–	–
B (300LB)		160	160	160	–	–	–	–	–	–	–	–

### Mounting Position



### Flow Range Table

Item Code	Flow Range	Connection Size
A	0~1.5 M <sup>3</sup> /H	½"(15A), ¾"(20A), 1"(25A)
B	0~3 M <sup>3</sup> /H	½"(15A), ¾"(20A), 1"(25A)
C	0~4 M <sup>3</sup> /H	½"(15A), ¾"(20A), 1"(25A)
D	0~8 M <sup>3</sup> /H	1¼"(32A), 1½"(40A), 2"(50A)
E	0~10 M <sup>3</sup> /H	1¼"(32A), 1½"(40A), 2"(50A)
F	0~12 M <sup>3</sup> /H	1¼"(32A), 1½"(40A), 2"(50A)
G	0~16 M <sup>3</sup> /H	1¼"(32A), 1½"(40A), 2"(50A)
H	0~18 M <sup>3</sup> /H	2"(50A)
I	0~24 M <sup>3</sup> /H	2"(50A)
J	0~22 M <sup>3</sup> /H	3"(80A) , FB type available only

FLOW

### Ordering Information

FA/FB	Code	Type	Code	Gasket Material
	W	With Paddle	N	(1) Teflon (2) Gore-Tex (3) Graphite
				(1) Without Paddle (Drip Tube)– scale unavailable
				Code CE 1128 Mark Request
				(1) with label sticker (2) with S.S nameplate
				(3) stamp (4) without
				Code Flow Range
				A~J Please refer to the Flow Range Table, and fill out the item code of requested range directly.
				N No need flow range scale
				Code Wetted Parts Material
				(1) SS316 (2) SS304 (3) SS316L (4) SS304L (5) option
				Code Size
				(1) 15A (2) 20A (3) 25A (4) 40A (5) 50A (6) 65A
				(7) 80A (8) 100A (9) 125A (10) 150A (11) 200A
				Code Connection Rating
				(1) JIS 10K (2) JIS 20K (3) ANSI 150#
				(4) ANSI 300# (5) PN10 (6) PN16
				(7) PN25 (0) option
FA/FB				Complete Ordering Code

