

DURAVIS PPV-A-PL1500 Series Intelligent Electropneumatic Valve Positioner



PPV-A-PL1500 series intelligent electropneumatic valve positioner is designed for integral pneumatic control valve, particularly suitable for angle seat valves and diaphragm valves.

The product is easy to operate. It can easily be operated via the keypad.

The positioner adjusts the valve position quickly and accurately through detecting the position sensor signal.

- Electrical waterproof connectors
- LED display
- Easy to start-up

Technical Data	
Material	PC、PA6-GF30、SI
Power Supply	24V DC \pm 10%
Set-point signal	4 – 20 mA
Input resistance for set-point signal	140 Ω
Control medium	neutral gases, air DIN ISO 8573-1
Dust concentration	Class 5 (<40 μ m particle size)
Particle density	Class 5 (<10mg/m ³)
Pressure condensation point	Class 3 (<-20°C)
Oil concentration	Class 5 (<25mg/m ³)
Ambient temperature	0-55°C
Pneumatic Connection	Plug-in hose connector G1/4(internal Φ 6mm)
Electrical Connection	M12 3-pins B-coded (cable \varnothing 4-6mm) M12 4-pins D-coded (cable \varnothing 4-6mm)
Supply Pressure	3~7 bar, specific values depending on the actuator
Stroke control range	5-50mm
Installation	As required, Preferably with actuator in upright position, Screw M26 \times 1.5
Protection Class	IP65
Power Consumption	<5W

Combinations

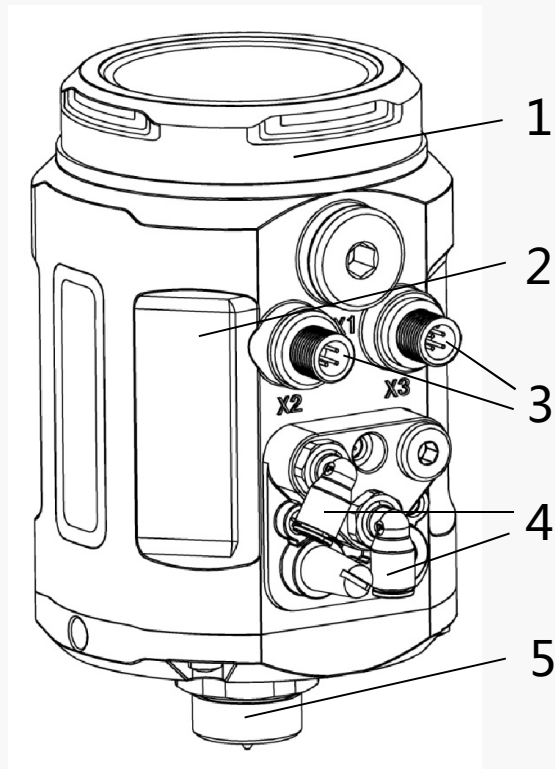


Diaphragm Control Valve



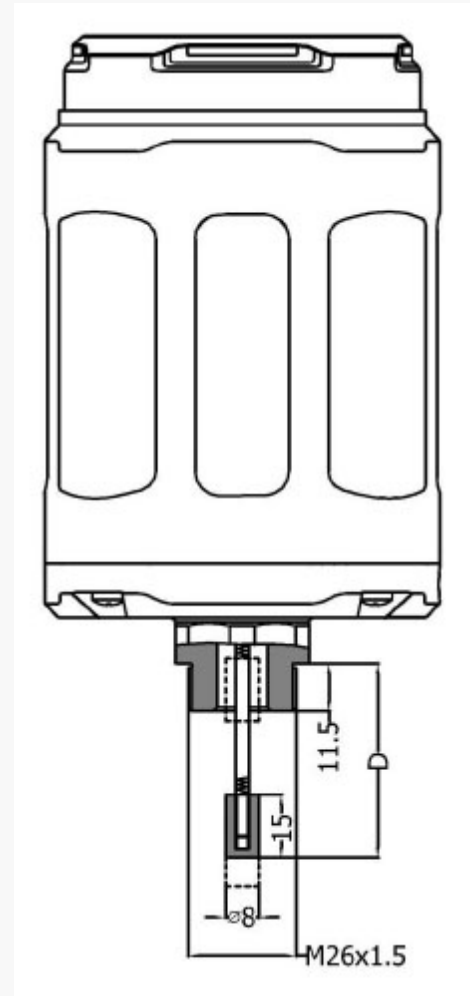
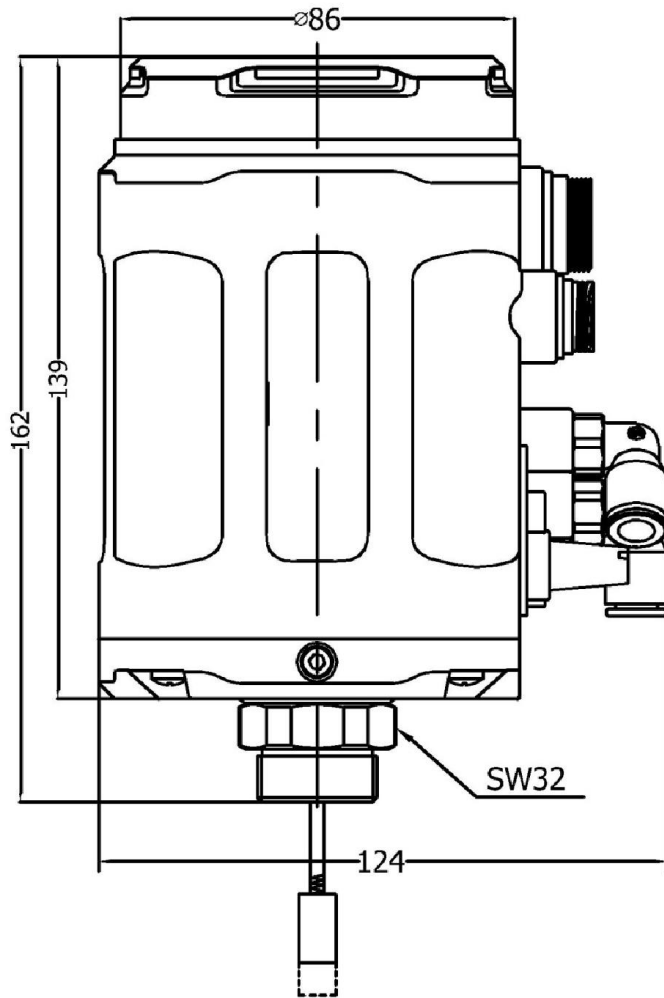
Angle Seat Control Valve

Structure



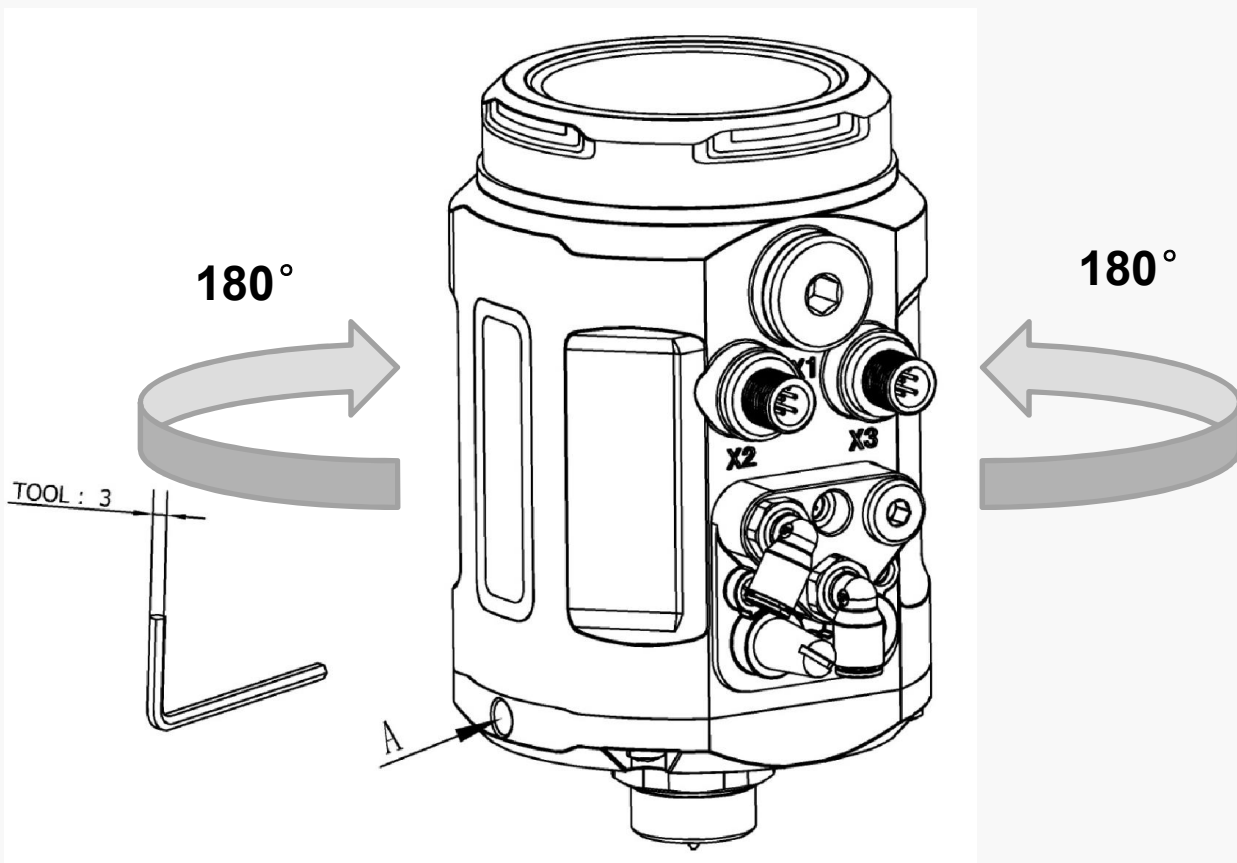
1. Protective cover
2. Main body casing
3. Electrical Connection
4. Pneumatic Connection
5. Actuator Connection

Dimensions

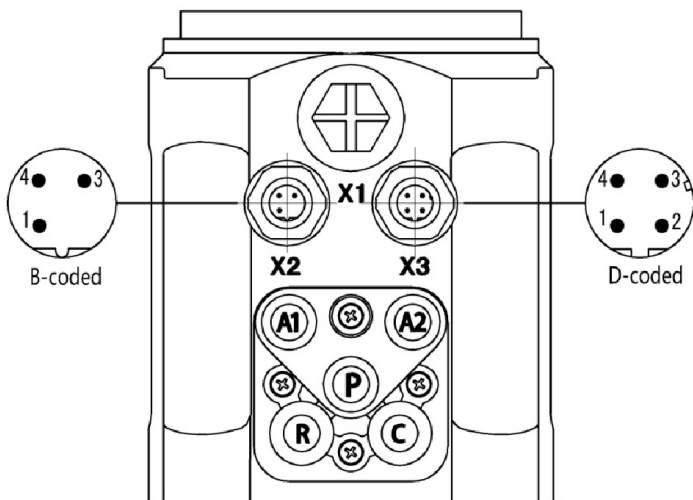


Interface angle adjustment

The angle can be adjusted between the positioner and the valve. If need to adjust the interface angle, relaxing the hexagon screw in place A first. Then adjusting the angle clockwise or counter-clockwise in 180° range. After adjusting the angle, locking the angle by the hexagon screw.



Electrical connections



X2(optional)

Pin	Description	Signal Type
1	Analogue signal output +	4 – 20 mA
3	Analogue signal output GND	GND
4	NC	NULL

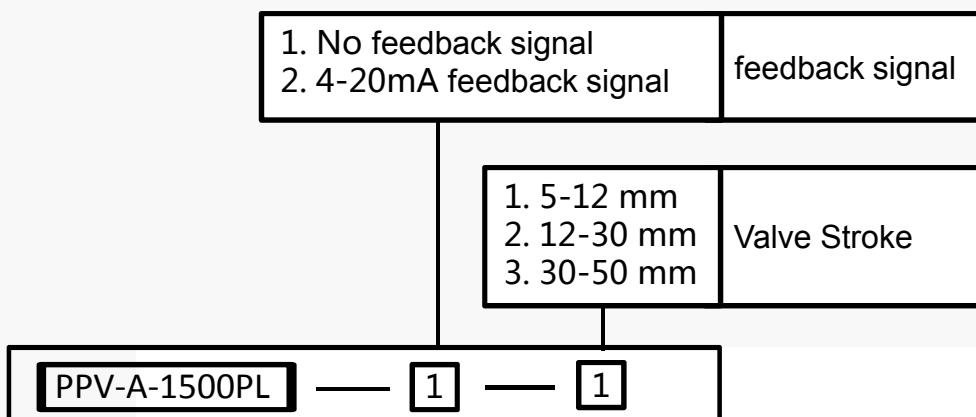
X3

Pin	Description	Signal Type
1	Power supply +	+24 V
2	Power supply GND	GND
3	Set signal input +	4 – 20 mA
4	Set signal input GND	GND

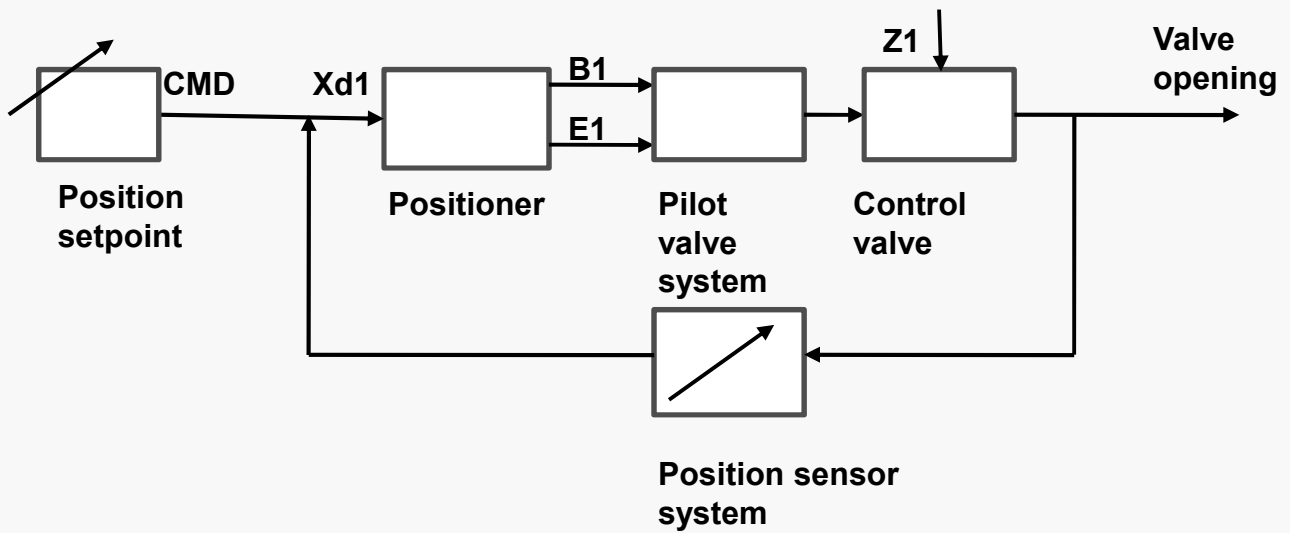
Pneumatic connections

P	Air supply enter (built-in filter, filter size 5 µm)
R	Air exhaust
C	Check valve
A1	Pilot air outlet

Product type selection



Signal flow diagram



Schematic diagram

