

Level Switch Nivofix RW-...HK

20.1.
RW.HK

GENERAL CHARACTERISTICS

Mechanical Level Switch in full metal design for liquids. A magnet-equipped float triggers a pre-fixed reed switch.

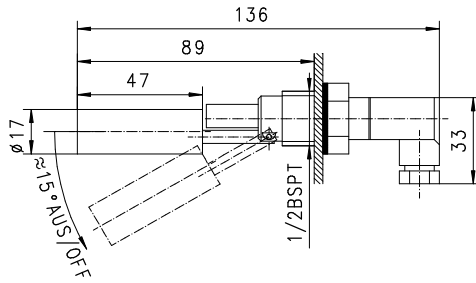
- wall mounting
- reliable
- high temperature
- good repeatability

Male thread 1/8 BSPP - 1/2 BSPT stainless steel

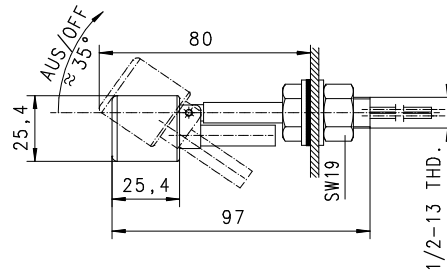


TECHNICAL DATA

	RW-015HKS
pressure	PN 5 bar
media temperature	max. 120°C
weight	110g
liquid density	≥0.75 g/cm³



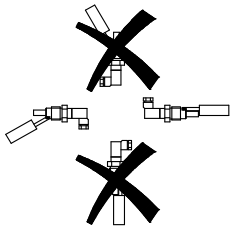
	RW-015HKL
pressure	PN 6 bar
media temperature	max. 200°C
weight	120 g
liquid density	≥0,70 g/cm³



MATERIALS

	RW-015HKS	RW-015HKL
body	stainless steel 1.4301	stainless steel 1.4571
float	stainless steel 1.4436	stainless steel 1.4571

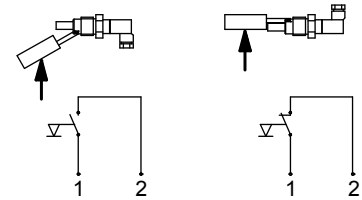
MOUNTING POSITION



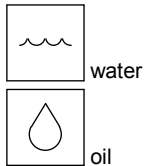
Installation position may influence operation!

ELECTRICAL DATA

reed switch	
wiring	0.225 n.c. or n.o. depending on installation position
plug design	250 V AC 0.5 A 50 VA plug similar to DIN 43650-C contact distance 9.4mm
lead design	220 V AC 0,28 A 30 VA lead 600 mm
protection class	IP 65



METERING SUBSTANCES



NOMENCLATURE

RW-	015	H	K	S	basic type specification
	015				<input checked="" type="checkbox"/> connection thread 1/2 BSPT
		H			<input checked="" type="checkbox"/> socket thread
			K		<input checked="" type="checkbox"/> stainless steel
				S	<input checked="" type="checkbox"/> plug (only RW-015)
				L	<input checked="" type="checkbox"/> leads

All technical changes reserved

BASIC Standard BASIC Programme option VARIO Special option PLUS Accessories not recommendable

01.03.2005
page 1 of 1



USKON AKIŞKAN KONTROL SİSTEMLERİ SANAYİ VE TİCARET LTD. ŞTİ.

Kemankeş Kara MustafaPaşa Mah. Ağaç Tulumba Sok. No: 4/A Karaköy / İstanbul Tel: +90 (212) 251 05 05 Fax: +90 (212) 251 05 79 info@us-kon.com.tr